

# Industrial & Plant Vehicles

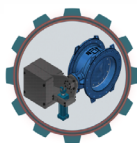
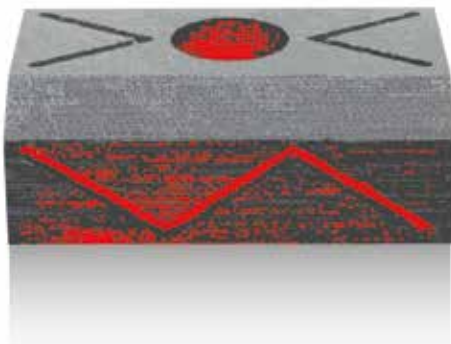
## TriboTex 3, TriboTex 7 & TriboGlide 15

ACM Composites has been developing, manufacturing and supplying highly engineered composite bearings for the Industrial and Plant Vehicles Industry for over 20 years.

ACM Composites is the original supplier of wear pads and journal bearings to most of the worlds OEM manufacturers and consequently our bearings are supplied for both current machines and the after market.

Due to there excellent mechanical, physical and self lubricating properties ACM materials are ideally suited for arduous applications where limited maintenance and zero down time is of paramount importance.

In addition the wear of these materials can be less than that of conventional metallic materials and with minimal surface damage to the counter face a longer life can be achieved. These materials are also resistant to many chemicals, do not corrode and are unaffected by many solvents, inorganic solutions and acids. The ACM range of materials can also be used against many different mating surfaces including hardened steel, stainless steel, chrome plated steel and nitrided surfaces.



**HYDRATECH** PTY LTD  
**acm** COMPOSITES

As a world class supplier ACM Composites offers a professional service with technical support from their experienced team of plastic technologists/application engineers including, design recommendation, technical proposals and quotation, machining recommendations and bearing installation assistance.

### Advantages in using ACM materials

- ▲ Competitive price
- ▲ Short delivery time (repair 48hrs)
- ▲ High load capability
- ▲ Counter face friendly
- ▲ Excellent shock resistance
- ▲ Excellent corrosion resistance
- ▲ Good elasticity
- ▲ Low swell characteristics
- ▲ Good dimensional stability
- ▲ Low friction
- ▲ Minimal creep
- ▲ Low wear rate - long life

### Applications

- ▲ Boom slide pads
- ▲ Wear pads for telescopic handlers
- ▲ Bearings for backhoe loaders
- ▲ Tipper pivots
- ▲ Cone crusher pads
- ▲ Jaw crusher pads
- ▲ Safe Neck bearing
- ▲ Gimbal bearings



0417 005288

**ACM Bearings Ltd, Derwent Way, Wath Upon Dearne, Rotherham, S63 6EX United Kingdom**

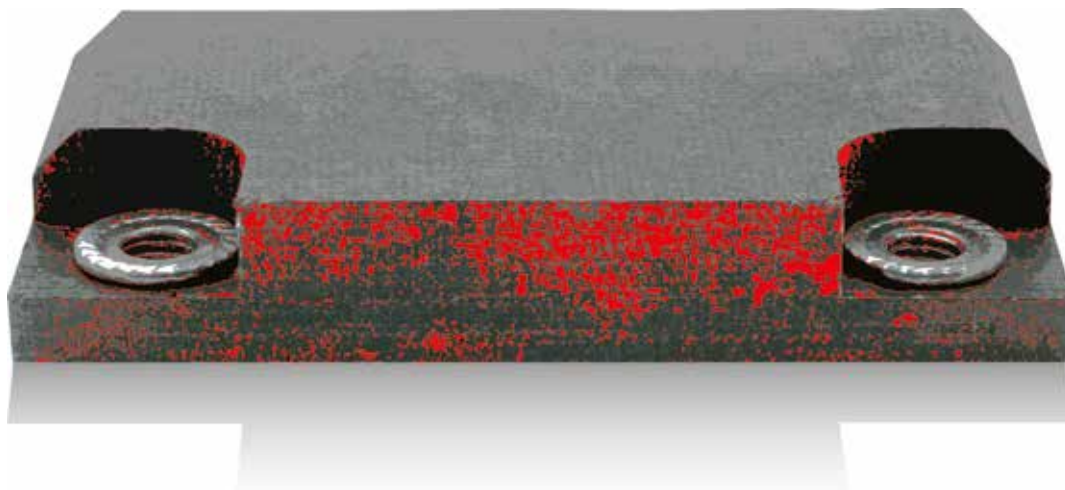
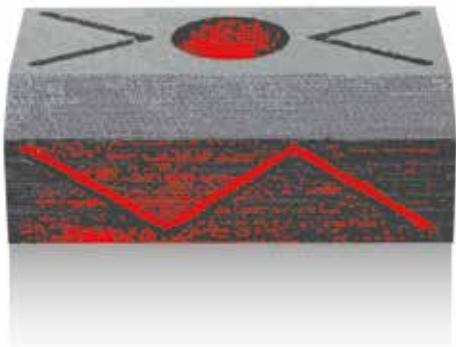
Tel +44 (0) 1709 874951 Fax +44 (0) 1709 878818 sales@acmbearings.co.uk www.acmbearings.co.uk

No representation is given as to the accuracy of the contents of this publication which are for general guidance only and should not be relied upon. Material characteristics are nominal and are not guaranteed minima. ©ACM Bearings Ltd. All propriety rights reserved.

# Material/Design Specification

Property	Unit	TriboTex 3	TriboTex 7	TriboGlide 15
Compressive strength (normal)	MPa	240	375	375
Compressive modulus (normal)	MPa	2,600	2,750	2,750
Impact strength (normal)	kJ/m <sup>2</sup>	100	100	100
Density	g/cm <sup>3</sup>	1.30	1.30	1.30
Hardness	Rockwell M	95	100	100
Coefficient of friction (dry)	-	0.15 – 0.18	0.13 – 0.15	0.07 – 0.12
Maximum operating temperature	°C	120	130	130
Minimum operating temperature	°C	-40	-40	-40
Thermal expansion coefficient (parallel)	/ °C	5 x 10 <sup>-5</sup>	5 x 10 <sup>-5</sup>	6 x 10 <sup>-5</sup>
Thermal expansion coefficient (normal)	/ °C	10 x 10 <sup>-5</sup>	10 x 10 <sup>-5</sup>	12 x 10 <sup>-5</sup>
Swell in water	%	1.0	< 0.15	< 0.20

(nominal values)



0417 005288

**ACM Bearings Ltd, Derwent Way, Wath Upon Dearne, Rotherham, S63 6EX United Kingdom**

Tel +44 (0) 1709 874951 Fax +44 (0) 1709 878818 sales@acmbearings.co.uk www.acmbearings.co.uk

No representation is given as to the accuracy of the contents of this publication which are for general guidance only and should not be relied upon. Material characteristics are nominal and are not guaranteed minima. ©ACM Bearings Ltd. All propriety rights reserved.